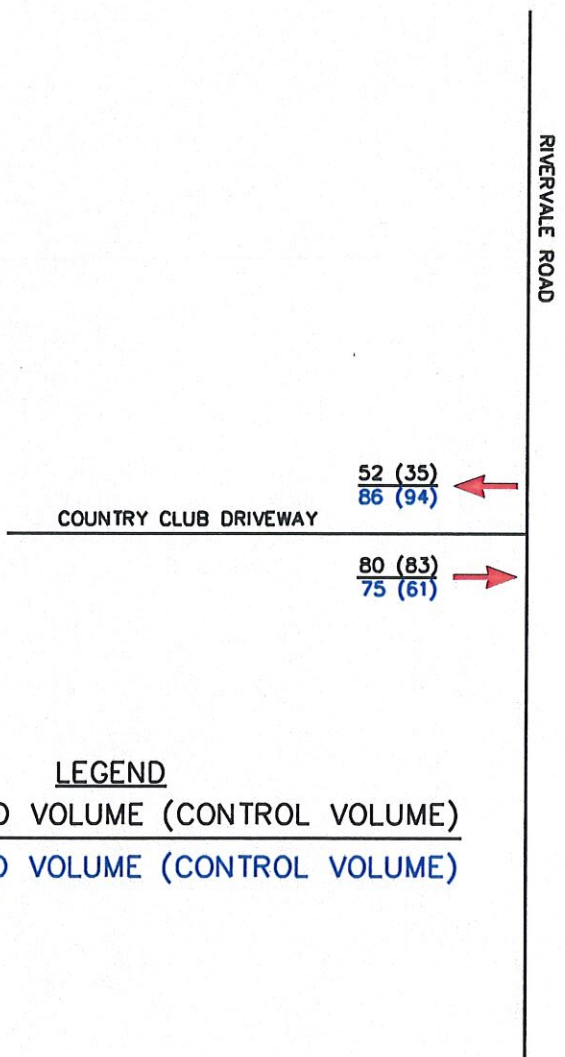


Exhibit B-4
CPS

**THE FAIRWAYS AT EDGEWOOD
TOWNSHIP OF RIVER VALE
BERGEN COUNTY, NJ
AM/PM PEAK HOUR TRAFFIC
2021 BUILD TRAFFIC VOLUMES
CHECKED AGAINST EXISTING DEVELOPMENT**



LEGEND

A.M. PROJECTED VOLUME (CONTROL VOLUME)
P.M. PROJECTED VOLUME (CONTROL VOLUME)

NOTES:

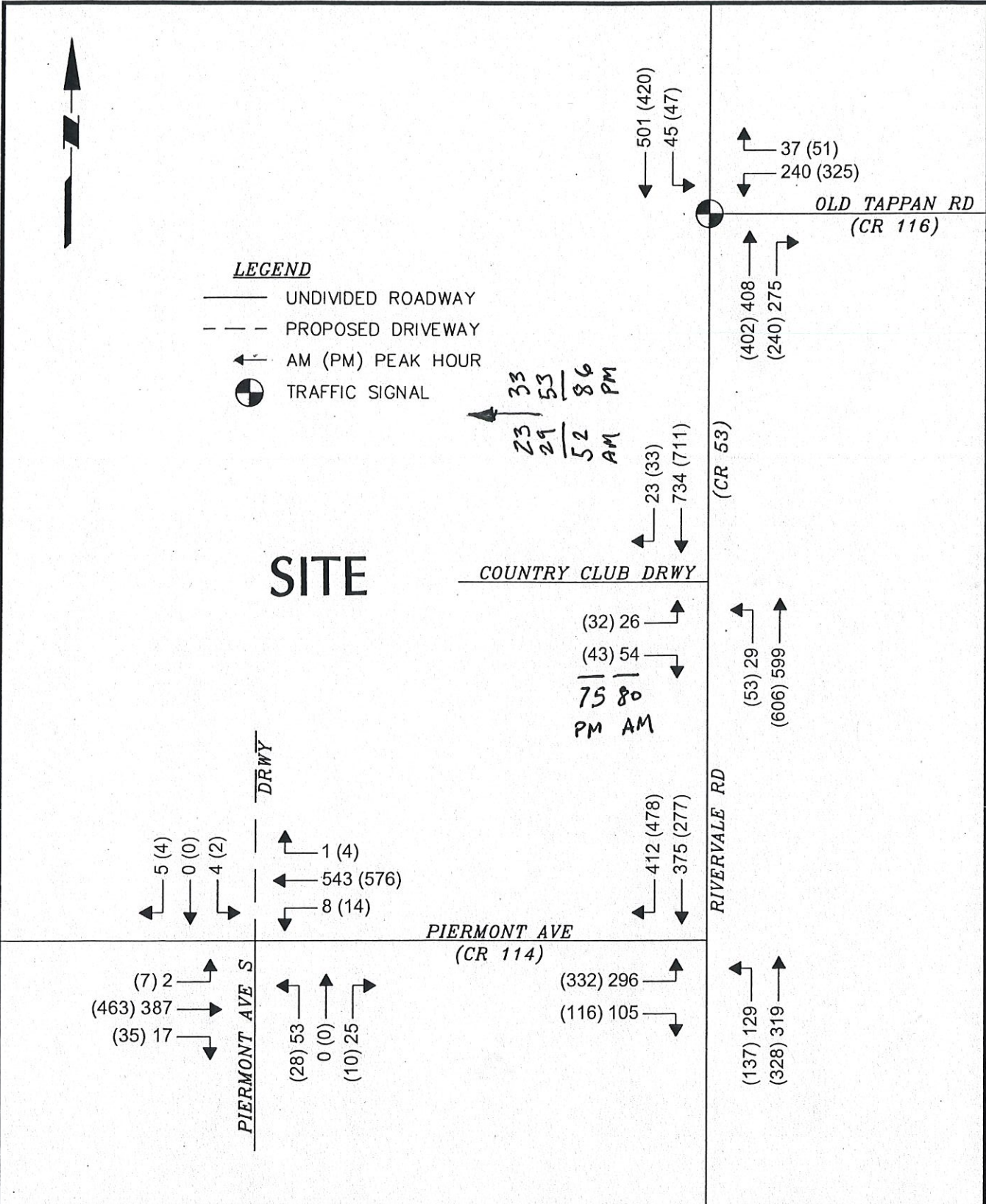
1. CONTROL VOLUMES TAKEN FROM A MANUAL TRAFFIC COUNT DATED FEBRUARY 5th, 2019 AT THE "RAMAPO RIVER RESERVE" DEVELOPMENT IN OAKLAND, N.J..
2. CONTROL VOLUMES ADJUSTED TO 56% OF THE ACTUAL FIELD COUNT TO MATCH THE DIFFERENCE IN THE NUMBER OF THE UNITS BETWEEN THE TWO DEVELOPMENTS.
3. PROJECTED VOLUME TAKEN FROM A TRAFFIC IMPACT STUDY FOR "THE FAIRWAYS AT EDGEWOOD" DATED AUGUST 31st, 2018 BY LANGAN ENGINEERING & ENVIRONMENTAL GROUP, INC.



LEGEND

- UNDIVIDED ROADWAY
- - - PROPOSED DRIVEWAY
- ← AM (PM) PEAK HOUR
- ⊙ TRAFFIC SIGNAL

SITE



LANGAN
 Langan Engineering and Environmental Services, Inc.
 989 Lenox Drive, Suite 124
 Lawrenceville, NJ 08648
 T: 609.282.8000 F: 609.282.8001 www.langan.com
 NJ Certificate of Authorization No. 24GA27996400

Project
THE FAIRWAYS AT EDGEWOOD
 BLOCK No. 1201, LOT No. 6
 TOWNSHIP OF RIVER VALE
 BERGEN COUNTY NEW JERSEY

Drawing Title
2021 BUILD TRAFFIC VOLUMES

Project No.
130123301
 Date
08/28/2018
 Drawn By
JEG
 Checked By
KAMP

Drawing No.
FIGURE 9
 Sheet 9 of 9